



# Specific facilities provided for women



## **GOVERNMENT COLLEGE NEDUMANGAD**

**THIRUVANANTHAPURAM, KERALA- 695541**  
***Under Government of Kerala***  
***Accredited by NAAC with 'A' Grade***

## Specific facilities provided for women in terms of:

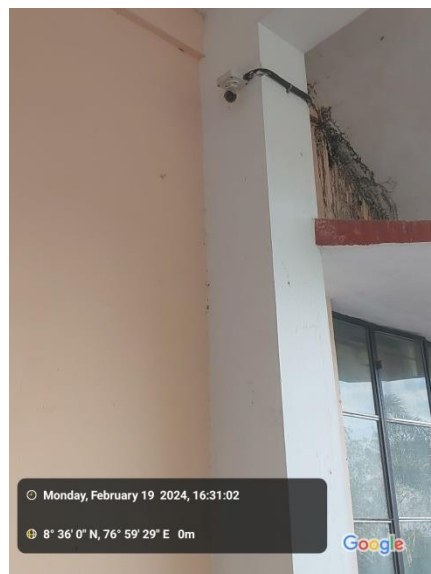
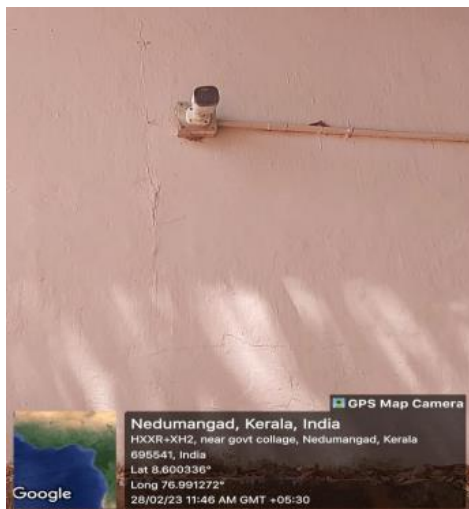
### a. Safety and security

Ensuring physical security on campus is a top priority for the college. A safe and secure environment not only fosters a sense of well-being among students but also promotes discipline and responsibility. The institution has implemented a robust security system with multiple layers of monitoring and support to address safety concerns effectively, especially for female students. The main measures include:

**1. 24/7 Security Guards:** Constant presence ensures order and fosters discipline and responsibility among students.



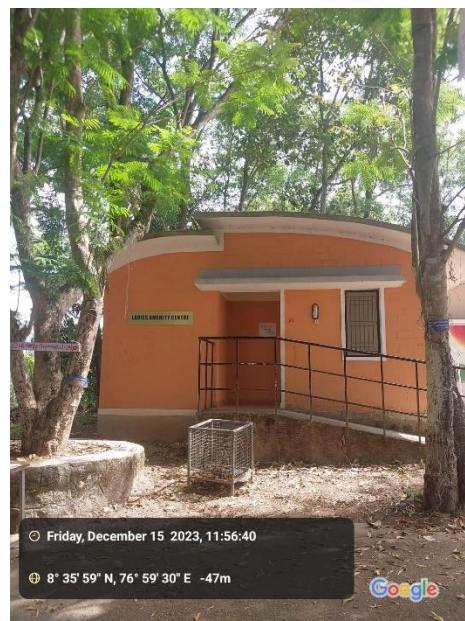
**2. CCTV Surveillance:** Plays a critical role in maintaining safety through effective visual monitoring.



**3. Grievance and Women Cells:** Provide platforms for submitting complaints or suggestions about safety through suggestion/complaint boxes on campus.



**4. Ladies Amenity Centre:** A dedicated facility that serves as a rest room and support area for female students.



**5. Student ID Cards:** Enhance security by clearly distinguishing students from unauthorized individuals, aiding in identity verification.





**6. Monitoring Committees:** Discipline Committee, Women Cell, Gender Club, and Committee Against Sexual Harassment ensure regular oversight of student activities to uphold safety and discipline.

### **b. Counseling**

Jeevani Centre for students' well-being is a project of department of Collegiate Education, Government of Kerala which was launched on the year 2019. The purpose of the project is the wellbeing of the mental health of the college students. A mental health professional in the position of Psychology Apprentice is posted on colleges for providing mental health services and conducting mental health related programs in the colleges.



### **c. Common Rooms**

We have a seminar hall, ORICE Room, an open auditorium and a canteen for students

**Seminar hall:**



**ORICE Room**





## Open auditorium



## Canteen



